

**CORVA**

CALIFORNIA OFF-ROAD  
VEHICLE ASSOCIATION

[www.corva.org](http://www.corva.org)

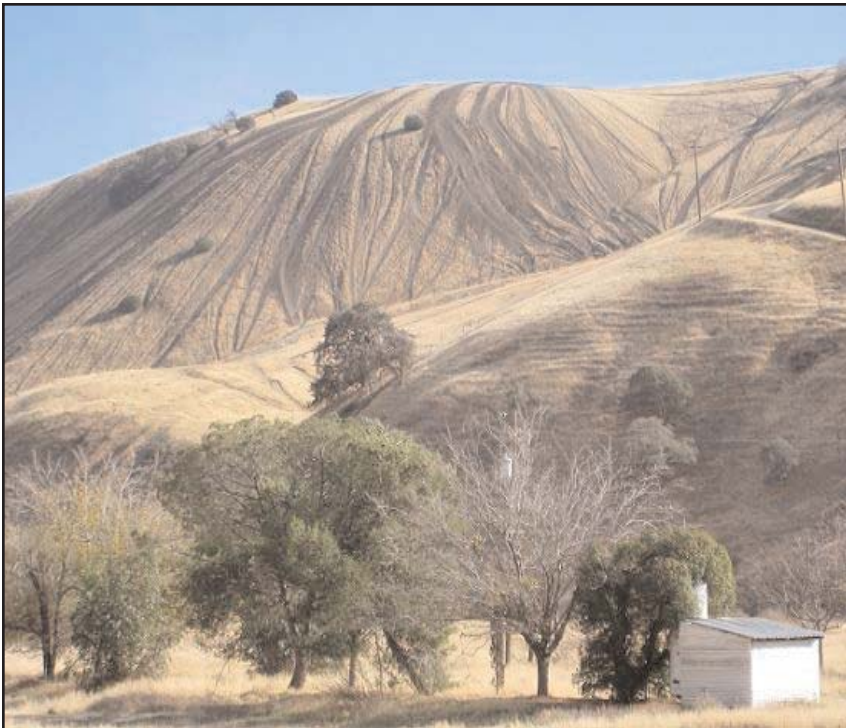
# ***OFF-ROADERS IN ACTION***

## *California Desert Conservation and Recreation Act Taking Shape*

CORVA representatives recently met with Senator Feinstein's staff to discuss a proposed Mojave National Monument. CORVA has been invited to attend stakeholder meetings and provide critical input as the bill takes shape. We have a very experienced and highly qualified group working on this issue. The proposal includes a reduced number of new wilderness areas and National Park expansions within Inyo, San Bernardino, Imperial, and San Diego Counties. New wilderness areas proposed by the California Wilderness Coalition include the Great Falls Basin north of Trona, the Avawatz Mountains, the Cady Mountains, The Soda Mountain, the Kingston Range and the San Gorgonio Mountains. There have been reports that the Slate Mountains and the Malpais Mesa in the Inyo Mountains around Cerro Gordo have been removed from the proposal. The proposal includes Wild and Scenic River designation for Surprise Canyon and the upper section of the Amargosa near Shoshone that was donated for conservation purposes by the landowner. Areas in the northern Panamint Valley and areas within north Death Valley National Park are likely to be included. CORVA land use specialists have reviewed every one of these areas and have recommended existing routes be kept open. Most of these areas are not OHV recreation destinations.

*continued on page 7*

## *Great News - SVRA Reopens After Fire*



Carnegie State Vehicular Recreation Area (SVRA) has been reopened. Damage from a recent fire, which led to a temporary closure of the popular SVRA, has been repaired. Currently, the tracks, the campground, the valley floor, and all of the park west of the Bunkhouse and Los Osos trails are open to riding. The fire, which started on private property adjacent to the SVRA, was initially driven by strong winds and spread quickly, burning onto state property and causing damage to the eastern portion of the park. The fire later turned away from the park, and continued to burn southeast toward Patterson. Approximately 250 acres of the eastern portion of the park were burned, including fence lines and areas of dense vegetation. The entire eastern portion of Kiln Canyon (east of Kiln Road), SRI Road, and the lands above the motocross track were burned.

Source: <http://www.ohv.parks.ca.gov>

*"Dedicated to protecting our lands for the people, not from the people."*



**DON'T MISS THE NATION'S  
BEST OFF-ROAD SHOW!**

**OFF-ROAD EXPO**  
OCTOBER 9-11

**PUMONA FAIRPLEX**

- THE LATEST IN OFF-ROAD PARTS & ACCESSORIES
- LIVE ENTERTAINMENT
- COOL TRUCKS
- ACTION FEATURES
- PRODUCT DEMOS

FOR SHOW TIMES AND DISCOUNT TICKET INFORMATION VISIT  
**OFFROADEXPO.COM**

FOLLOW US ON [my4spumona.com](http://my4spumona.com)

**10<sup>TH</sup> ANNUAL  
OFF-ROAD  
EXPO**  
PRESENTED BY TOYOTA



## WHAT IS CORVA?

*The California Off Road Vehicle Association (CORVA) is a varied group of outdoor recreationalists who are extremely active in promoting the positive aspects of vehicular access on public lands and protecting that right.*

*The group is composed of the owners of "Green Sticker" vehicles such as ATV's, motorcycles, 3-wheelers, trail bikes, and dune buggies, as well as "street legal" 4x4 vehicles, dual sport motorcycles, baja and desert racers.*

*The main purpose of CORVA is to have fun! We also work with the land managers for responsible off-highway vehicular access and recreation opportunities. Secondly, we educate our membership on the constantly changing rules and regulations and promote conservation, clean-up and trail maintenance projects.*

*We participate in lobbying activities in both Sacramento and Washington DC. We work closely with the State Department of Parks and Recreation providing input to the Off-Highway Motor Vehicle Recreation (OHMVR) program from the users' standpoint. We provide a valuable resource to land managers in the form of dedicated OHV enthusiasts who believe in using our public lands responsibly.*

*We are active at all levels of the land management public process with both the BLM and USFS. We do this by commenting on many environmental documents on issues that affect us.*

*We coordinate with other multiple use organizations such as snowmobiles to horse enthusiasts to protect multiple use rights that we both share. Only together can we fight the extremists. We are,*

***"Dedicated to protecting our lands for the people, not from the people."***

## CONTENTS

President's Message	4
Northern Jamboree-Oct. 23-25	5
Inyo National Forest Announcement	6
Land Use Resources and Public Policy Report	7
Educational News - Tips for Responsible Dirt Biking	10
Awards Presented	11
CORVA Survey Update	11
CORVA Club Sponsorship	12
Donations & New Members	13
Associate Members	14
Membership Application	15
CORVA Calendar	16

## BOARD OF DIRECTORS

Jim Woods	President
Jim Colln	Vice President - Administration
Bruce Whitcher	Vice President - Land Resources & Public Policy
Dan Eger	Vice President - Education
Scott O'Connell	Vice President - Sales & Marketing
Roberta Woods	Treasurer
Katherine Kelsey	Secretary
Amy Granat	Northern Regional Director
Doug Houser	Assistant Northern Director - Legislation
Kyra	Assistant Northern Director - Grants
Diana Mead	Assistant Northern Director - Clubs
Debra Campbell	Northern Regional Secretary
Jim Arbogast	Southern Regional Director
George Paniagua	Assistant Southern Director - Legislation
Ed Stovin	Assistant Southern Director - Grants
Jeff Leonard	Assistant Southern Director - Clubs
Clayton Miller	Southern Regional Secretary

Contact us at: [corvabod@corva.org](mailto:corvabod@corva.org)

Mailing Address: 1500 W. El Camino Ave. #352  
Sacramento, CA 95833-1945

Phone: 800-42-CORVA

Newsletter Editor: Eric Pearson [editor@corva.org](mailto:editor@corva.org)

## **PRESIDENT'S MESSAGE**

**By Jim Woods**

### **Let's All Agree to Show Our Support**

It has been an interesting month waiting in anticipation for the new Desert Conservation and Recreation Act to be introduced by Senator Feinstein. The actual language isn't finished and the comments sent by CORVA, ORBA and AMA District 37 are still being reviewed. Soon we will have a meeting with the environmentalists to discuss our differences and come up with a compromise.

More to my surprise was the new energy bill proposed with the installation of solar power and wind generators in the desert. This seems like a no-brainer upon first examination. Where the problem starts is that some environmentalists don't want them in our California Deserts. The proposed area is out by Desert Center -a non populated area close to the Blythe, Arizona border. If you have ever been out there, you know how open and unpopulated it really is. However, even though this seems like a optimum placement for these sources, the untouched area will be effected by the creation of this new installation. Everyone proclaims to want clean energy, just as long as it's not in their back yard. I am not sure this is the correct answer to our energy problems but it amazes me that the even the environmentalists can't agree on where to put the alternative power sites. We OHV users have given up so many areas over the years, I have a hard time understanding why they can't compromise. We've sure had too! And not without a lot of pain and anger to go along! We will just have to wait and see where the compromise comes. Hopefully not from yet another OHV area.



One way to keep our voices heard is to participate in the State OHV Commission meetings. I recently received a phone call from Paul Slavik, one of the State Parks OHV Commissioners. He and OHV State Parks Chief Daphne Green are asking for input from the OHV public and they want YOU involved in the OHV meetings. During these meetings, the commissioners discuss important events for the various areas. For example, one recent meeting was held in Big Bear where all types of OHV use is available. Discussions included trails, maintenance, user groups, open access, bicycle trail use, wildlife issues and much more. I learn something new at every meeting I attend. Plus, I meet new people and I'm always impressed by their perspective. We can learn from each other, appreciate each other and understand a lot more. You can find the dates for the OHV Commission meetings at: [www.ohv.parks.ca.gov](http://www.ohv.parks.ca.gov) and on our CORVA website. Please participate whenever you can regardless of the areas you ride. If we don't participate, then we cannot complain when important decisions are decided by others. There is no one organization that represents all aspects off road or that should be allowed to speak for all of us. All OHV users and OHV riding areas have their own issues. It's up to each of us to speak for ourselves and be involved in preserving our areas.

Check our event calendar for our events and shows. Continue your support for the hard working volunteers and the supporting vendors of OHV. I hope to meet you at a future OHV Commission meeting. (If I'm not there, tell Paul Slavik I said hello. We're old dirt riding buddies from the 1970's) And if you get a chance, try engaging yourself in some new off road use. In November, my Vice President Jim Colln is taking me to Glamis. I've never played in the sand myself but I know how important it is to support ALL of our OHV recreation areas. I hope to see you there too!



# NORTHERN JAMBOREE

**OCTOBER 23-25th 2009**

**FRANK RAINES OHV PARK IN PATTERSON, CA.**

**TIME EVENTS INCLUDE: WIGGLEWORM, BARREL LOOP  
QUAD CHALLENGE, PUMPKIN CARRY AND MORE.**

**TRICK OR TREATING, COSTUME CONTEST  
FOR THE KIDS AND ADULTS!!**

**RAFFLE PRIZES**

**DINNER SATURDAY NIGHT!  
CORVA MEETING ON SUNDAY**



IF YOU ARE LOOKING FOR GOOD WHOIESOME FAMILY FUN, COME AND JOIN US AT FRANK RAINES PARK FOR CORVA'S NORTHERN JAMBOREE. THE PARK OFFERS FULL HOOKUPS, BATHROOMS, SHOWERS AND LOTS OF RUNNING SPACE!

FOR MORE INFORMATION CONTACT:

[debra.campbell@corva.org](mailto:debra.campbell@corva.org)

EVENTS SUBJECT TO CHANGE WITHOUT NOTICE

Its time to start making your plans for the Northern Jamboree. October 23 - 25th 2009. Mark this date on your calendar and bring your family and friends to Frank Raines Park, Patterson for a fun-filled weekend. Friday we will have horseshoe competition in the afternoon and Bingo in the Recreation Room that night.

Saturday we start registration and the fun begins with course events that include Barrel Loop, Pumpkin Carry, Egg Carry, Wiggle Worm and Quad/Motorcycle Challenge. In the afternoon we have Children's events and costume contest with a time for Trick n Treat. That evening we have a wonderful dinner, awards, raffle prizes and music (karaoke). Then most go back to camp and talk about their day, visit with friends and family. Sunday we have our CORVA meeting and we would love everyone to come.

We are encouraging volunteerism and are looking for more people to volunteer themselves or their club. We could always use fresh ideas and feedback. You can help in so many ways, by getting raffle prizes, helping at registration, working in the kitchen and so much more.

Please contact Debra Campbell, Northern Secretary at: [debra.campbell@corva.org](mailto:debra.campbell@corva.org)



## ***Inyo National Forest Announces the Release of the Motorized Travel Management Final Environmental Impact Statement and Record of Decision***

Inyo National Forest Supervisor Jim Upchurch has signed a Record of Decision approving the selection of Modified Alternative 6 for the Motorized Travel Management project. The decision follows over five years of route inventory, environmental analysis, and extensive public involvement and discussion.

The long anticipated decision incorporates the suggestions of an independent collaborative group that worked through differences to develop a community-based proposal for the Forest's new transportation system. The group's proposal was developed into Alternative 6, which was analyzed in the Draft Environmental Impact Statement (EIS), and modified in the Final EIS before becoming the Selected Alternative in the Record of Decision.

From the start, this project has been about balancing the various needs for motorized recreation opportunities with the need to protect natural and cultural resources," said Upchurch. "I believe my decision strikes the best balance in providing motorized access with the protection of these critical resources."

As described in the Record of Decision the Selected Alternative will restrict public motorized use to designated National Forest Transportation System (NFTS) roads, trails, and areas. It will add to the system:

- 850 miles of high-clearance native surface roads as high-clearance roads open to all vehicles,
- 122 miles of motorized trails open to all trail vehicles,
- 20 miles of ATV trails,
- 15 miles of motorcycle trails.

The Selected Alternative includes limited changes to existing NFTS roads, including changes in vehicle class, and identifies mitigation efforts that must be completed prior to designating certain routes for motor vehicle use.



I believe my decision provides a transportation system for the future by providing a sustainable system of roads and trails while protecting important resource values," said Upchurch. "It removes many duplicative routes, and provides interconnected loops and linkages into backcountry landscapes, including a key north/south connector between the Inyo Mountains and the White Mountains."

Upchurch said that in making his decision he drew heavily upon the local knowledge and experience of users of the Inyo National Forest. Throughout the multi-year process members of the public have continually provided input on how a transportation system could provide better access to important recreation destinations or better protect the resources. He stated that the final decision was strengthened by all of the input that helped to design a functional network of roads and trails for the enjoyment of both local residents and visitors to the area.

This fall the Forest Service will work to complete a Motor Vehicle Use Map (MVUM) depicting the designated system on the Inyo National Forest, which will be made available to the public at no cost. The MVUM will be revised and reissued as needed to accommodate future changes to the designated transportation system on the Inyo National Forest.

CD copies of the Final EIS and Record of Decision have been mailed to everyone who commented on the Draft EIS. To request a copy of the Final EIS and the Record of Decision, please contact Marty Hornick at 760-873-2461 or Susan Joyce at 760-873-2516. The FEIS and ROD can also be downloaded from the Forest's website at <http://www.fs.fed.us/r5/inyo/projects/ohvrout5.shtml>, however the file sizes of the maps are quite large, so please request a CD if access to high-speed internet is not available.

# CORVA Land Use Resources and Public Policy Report

By Bruce Whitcher

CORVA VP of Land Resources and Public Policy

*continued from page 1*

## Con't *California Desert Conservation and Recreation Act Taking Shape*

As previously announced by Senator Feinstein, there will be a Mojave National Monument that includes land donated by Catellus Corporation for conservation purposes, land donated by the Wildlands Conservancy, and existing wilderness areas. Relatively little of the land within the proposed Monument is presently open for OHV recreation, and it appears that motorized travel on existing designated routes within the Monument will be preserved.

This bill is a unique opportunity for the OHV community to be at the table during the drafting of a major conservation bill. For the first time any of us can recall we are being taken seriously as stakeholders. This affirms that OHV recreation is a valid use of public lands. This represents a major advance compared to the Boxer - McKeon bill where negotiations were much more contentious.

CORVA is working to preserve traditional uses of the desert including "off roading" but also equestrian endurance rides, mountain biking, and vehicle access for such activities as gem and mineral collecting, spring wildflower viewing, and family backcountry touring and picnic outings. Special thanks is due to Helen and Harry Baker, Randy Banis, Mark Howlett, Dave Beaumont, Ron Schiller, Wayne Nosala, Matt Hensel, Bob Ham and many of the others who have worked very hard on this proposal.

The future use of Johnson Valley may be considered as part of this draft bill.

### • [FAQ's: The California Desert Conservation Area \(CDCA\)](#)

**Q. What is the CDCA?**

**A. The CDCA is a 25-million acre expanse of land in southern California designated by Congress in 1976 through the Federal Land Policy and Management Act. About 10 million acres are administered by the U.S. Bureau of Land Management (BLM).**

- About 4 million acres are Class C (controlled). These include 69 wilderness areas totaling 3,667,020 acres created by Congress with the October, 1994 passage of the California Desert Protection Act. These lands are to be preserved in a natural state and access is generally limited to non-motorized, non-mechanized means (i.e., by foot or horseback).

- About 4 million acres are Class L (limited use). These lands are managed to protect sensitive, natural, scenic, ecological, and cultural resource values. They provide for generally lower-intensity, carefully controlled multiple uses that do not significantly diminish resource values.

- About 1.5 million acres are Class M (moderate use). These lands are managed in a controlled balance between higher intensity use and protection. A wide variety of uses, such as mining, livestock grazing, recreation, energy, and utility development are allowed. Any damage, which permitted uses cause, must be mitigated.

- About 500,000 acres are in Class I (intensive use). These lands are managed for concentrated use to meet human needs. Reasonable protection is provided for sensitive natural values, and mitigation of impacts and rehabilitation of impacted areas will occur when possible.

**Q. How does BLM's Plan provide for "appropriate" use of off-highway vehicles?**

**A. The plan designates public lands as open, limited, or closed to OHV use. About 500,000 acres are designated as open to intensive OHV use, such as portions of the Imperial Sand Dunes that draw tens of thousands of visitors on holiday weekends. Another 4 million acres are closed to OHV use because they are located in designated wilderness areas or contain extremely sensitive resources. The remaining land is in the limited category.**

**Q. What does the "limited" category mean?**

**A. Limited means that off-highway vehicles are allowed on existing or approved routes of travel. The nature of the restriction is posted on signs and in public information materials, including detailed maps available from BLM, called Desert Access Guides. These guides show approved routes of travel and points of interest.**

Continued on next page



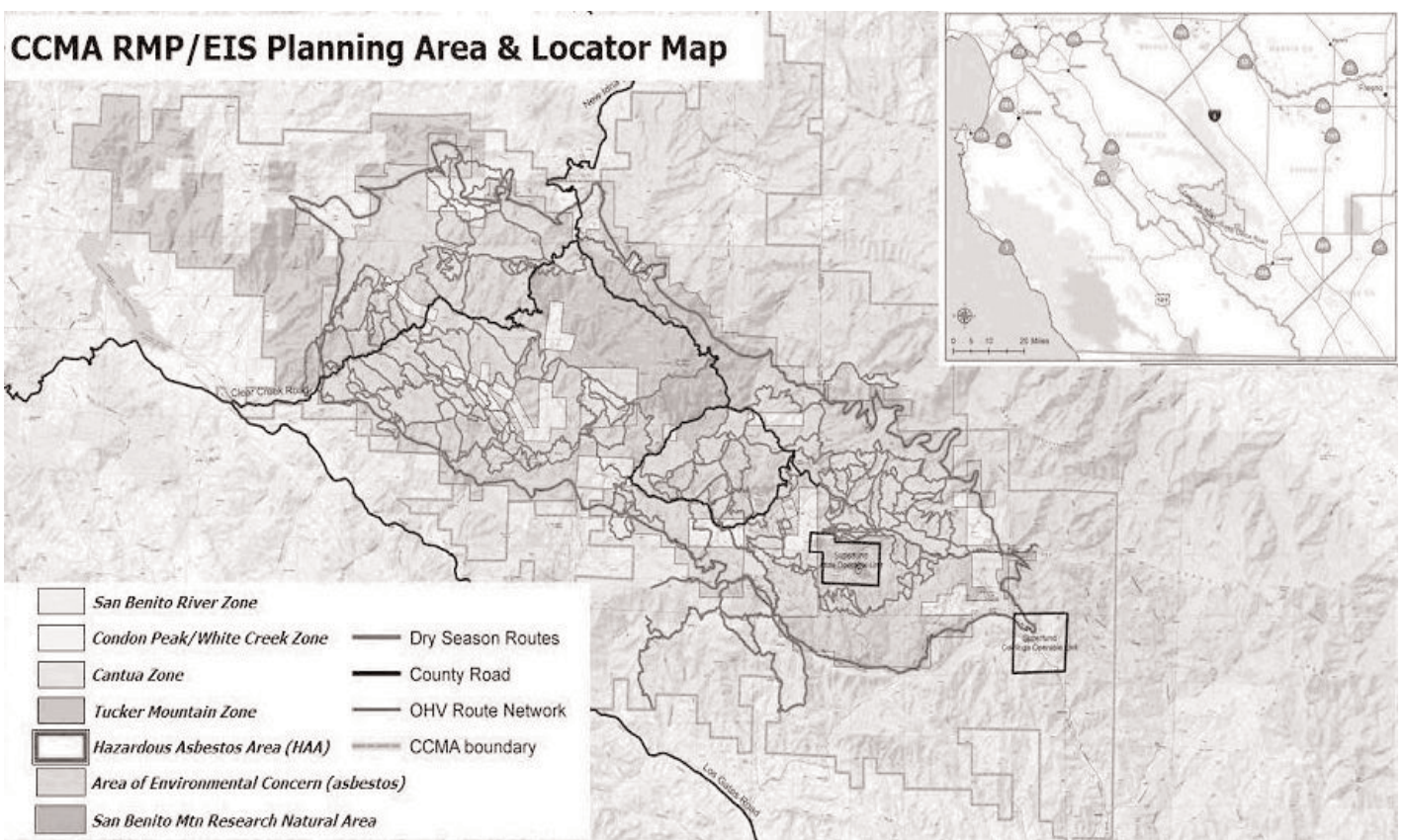
• **Preliminary alternatives are available for review for the proposed ISDRA Management Plan.**

The ISDRA is presently managed under the 1987 ISDRA RAMP. Information and decisions from the existing RAMP will be reviewed and incorporated in this plan to the extent possible. Management will continue under the 1987 RAMP until the current planning effort results in an approved Record of Decision (ROD). Although BLM welcomes input at any time during the planning process, the next official public comment period will be open upon publication of the ISDRA Draft RAMP and Draft EIS, which was anticipated to be released to the public in spring 2009. The draft document will contain a range of management alternatives for ISDRA public lands administered by the El Centro Field Office, including a “No Action” alternative.

The document is available online at the El Centro Field Office website: <http://www.blm.gov/ca/st/en/fo/elcentro.html>

Public meetings will be held during the 90-day comment period which will be announced through local news media at least 15 days prior to the event. At the conclusion of the Draft RAMP and Draft EIS public comment period, the BLM will respond to comments and prepare a Proposed RAMP and Final EIS, which is anticipated to be released in January 2010. The availability of the Proposed RAMP and Final EIS will be announced in the Federal Register followed by a 30-day protest period. At the conclusion of the protest period, the BLM will resolve valid protests and prepare a Record of Decision (ROD) which is anticipated to be released in spring 2010. A NOA for the ROD will be announced in the Federal Register .

• **Clear Creek Management Area Update**



BLM representatives recently indicated that the preferred alternative would be a “compromise” and that motorized access to the area would be limited to areas outside the so called “Red Zone”.

The Blue Ribbon Coalition recently sent out a press release citing data gleaned from a recent Freedom of Information Act request filed in May 2009. The letter specifically points to the fact that the agency summarily dismissing important information or questions submitted by BLM staff or by BRC consultants during the public scoping period which followed the functional closure of the of the entire 75,000 acre Clear Creek Management Area (CCMA) on May 1, 2008, to all public uses.

The letter, signed by Paul Turcke, an attorney for the BlueRibbon Coalition, highlights a number of the documents obtained, such as a memo authored by BLM experts seeking underlying data and questioning methodology relied upon by the EPA in its May, 2008 report that forms the basis for BLM's closure of the CCMA.

Continued on next page



### • New Safety Regulations Proposed At Oceano Dunes

The California State Parks Off-Highway Motor Vehicle Recreation Division recently held a regulatory hearing regarding proposed revisions to the safety regulations for Oceano Dunes State Vehicle Recreation Area. The current regulations require a whip and flag for non-street legal vehicles. The new proposal would require a whip and flag for every vehicle in the dunes. This requirement would be consistent with the regulations for Dumont Dunes and Imperial Sand Dunes Recreation Areas, which are popular areas managed by the Bureau of Land Management.

Source: [http://www.ohv.parks.ca.gov/?page\\_id=25980](http://www.ohv.parks.ca.gov/?page_id=25980)

### • Johnson Valley

Discussions regarding this critical area for OHV recreation continue. Although the military has indicated some willingness to accommodate existing uses of the area, it seems likely that much of Johnson Valley will ultimately be included in the base expansion. At this point we are awaiting the release of the draft EIS that will reveal the alternatives under consideration.

Link to the Partnership for Johnson Valley website: <http://www.pfjv.org/com>

### • BLM Officials Meet with CORVA and other OHV representatives to Discuss OHV Policy

CORVA representatives will present area, road and trail selection criteria to the Central California RAC in September. The goal is to use the selection criteria to assist the agency in identifying potential areas for OHV use in central California. Due to the lack of available land, adjacent parcels may have to be acquired to expand BLM holdings.

Development of the criteria is the first step in the long process of identifying possible locations that can accommodate OHV recreation in response to the needs of the growing population and dwindling opportunity.



## Powder Coating Plus



**Powder coating is the process of applying a very durable and protective cosmetic finish to metal parts. Powder coating does not have the emissions or harmful V.O.C.s (Volatile Organic Compounds) that are inherent in the wet paint process.**



**Our 10 ft x 10 ft x 25 ft media blasting booth allows for large items such as panels and frames to be properly prepared for powder coating.**



**Because powder coating is so durable, the automotive industry recognizes the advantages of this process. Formulations are available that will resist chemicals and Ultra Violet (UV) rays. Imagine your motorcycle frame, ATV frame, suspension components, custom wheels, or other assemblies in eye catching colors that give your project that "extra" touch of class.**

**26140 Avenue Hall Valencia, CA 91355**



**Voice (661)295-0205**

**Fax (661)257-3522**

**[www.powdercoatingplus.com](http://www.powdercoatingplus.com)**





**SHARE THE TRAILS**

[WWW.TREADLIGHTLY.ORG](http://WWW.TREADLIGHTLY.ORG)

Name: \_\_\_\_\_  
 Street: \_\_\_\_\_  
 City: \_\_\_\_\_ Zip: \_\_\_\_\_  
 I am donating: \$ \_\_\_\_\_

To make a donation please  
 Make checks payable to:

Mail to: **Tread Lightly! Inc**  
 298 24th Street, Ste 325  
 Ogden, UT 84401

(CORVA is an Official Partner Club)

**EDUCATIONAL NEWS**

*From Tread Lightly!*

**Tips For Responsible Dirt Biking**

- Travel only in areas open to dirt biking.
- On slick trails, moderate the throttle and use the clutch to gain maximum traction with minimum tailspin.
- On switchbacks, avoid roosting around the apex of the turn when climbing or brake-sliding during descent, both of which gouge the trail.
- Drive over, not around obstacles to avoid widening the trail.
- Cross streams only at designated fording points or where the trail crosses the stream.
- Buddy up with two or three riders. Riding solo can leave you vulnerable if you have an accident or breakdown. Designate meeting areas in case of separation.
- Respect the rights of others including private property owners and recreational trail users, campers and others to allow them to enjoy their recreational activities undisturbed.
- If crossing private property, be sure to ask permission from the landowner(s).
- Yield the right of way to those passing you or traveling uphill. Yield to mountain bikers, hikers, and horses.
- Do not idly ride around in camping, picnicking, trailhead and residential areas.
- Keep speeds low around crowds and in camping areas.

**CALIFORNIA OFF-ROAD FIELD VOLUNTEERS**  
*"Making a Difference"*  
 Visit [outinthedirt.com](http://outinthedirt.com)  
 Share your adventure with [tacomasuz@outinthedirt.com](mailto:tacomasuz@outinthedirt.com)



**REVTEK™ INDUSTRIES**  
 Suspension Lift Systems

"The Ultimate in On and Off road Suspension"  
 503-859-1650  
[www.revtek.com](http://www.revtek.com)



**GENRIGHT OFF ROAD**

**Manufacturer of Jeep Parts & Accessories**  
[www.genright.com](http://www.genright.com) - 805-584-8635

**ADVERTISE IN THE "OFF-ROADERS IN ACTION"**  
**Advertising Rates**

	<u>3mo</u>	<u>6mo</u>	<u>12mo</u>
Full Page (7 1/2" x 9 1/2")	\$480	\$870	\$1,560
1/2 Page (7 1/2" x 4 3/4")	\$270	\$480	\$860
1/3 Page (7 1/2" x 3 1/4")	\$195	\$375	\$625
1/4 Page (3 3/4" x 4 3/4")	\$165	\$300	\$540
Business Card (3 5/8" x 2")	\$90	\$162	\$264

Firewood for home or campsite



**BUNN WARMERS FIREWOOD**  
 8156 Bay Avenue  
 California City, CA 93505  
 760-373-2727

Chris Nakahara                      Robert Mahler

For more information please contact us at: 800-42-CORVA  
 Send an email to: [advertising@corva.org](mailto:advertising@corva.org)

**We need you to help CORVA make a difference**  
 Show your support and advertise in the newsletter



**Giving Credit Where Credit Is Due**

Roberta and I had the privilege of attending the Point Mugu 4x4 Club meeting and awarding them the “Los Aventureros State Conservation Award” for all their hard work on the Las Padres National Forest and Miller Jeep Trail. Miller has been closed due to the fires and now is slated to reopen hopefully this fall. This is a perfect example of the Forests and clubs working together to help keep our trails open to all.

We also presented Terry Work, Pt Mugu’s VP the Past Presidents award and were pleasantly surprised to have past President Ed Waldheim attend and present him with his trophy. Again thanks to all of our 2008 award recipients all for your hard work and dedication to keeping our trails and recreation areas open!

Jim & Roberta Woods



Pt. Mugu Vice President Terry Work accepts the Past Presidents award from past CORVA President Ed Waldheim



Pt Mugu President Brian Counter receives the Conservation award from CORVA President Jim Woods

**CORVA SURVEY - Update**

We would like to thank those members below that have taken the ten minutes to fill out the survey. The survey is still available and can be found here:

<http://www.corva.org/survey2009.html>

Results are used to better our understanding and goals plus added to your membership profile. In a future issue we plan to highlight the results, will yours be included? Don't delay, take the survey today... Thanks again to those below.

- |                   |                 |                 |                  |                 |                  |
|-------------------|-----------------|-----------------|------------------|-----------------|------------------|
| Randy Adams       | Jeff Brady      | Shannon Deese   | Ed Greenwood     | Sandra Murg     | Bil Seymour      |
| Gene Anderson     | Ron Bridges     | Darryl Deinhard | Meg Grossglass   | Bruce Niles     | Eric Steiger     |
| Jim Arbogast      | Curtis Brown    | David Doll      | Bob Ham          | Tom Nosala      | Gerard Steiner   |
| Kirk Baker        | Gerald Burchell | Gary Dorall     | Jim Harris       | Tim Nowak       | Aaron Stephens   |
| Vincent Barbarino | John Burnham    | Alan Draper     | Craig Heyne      | Jack Nudelman   | Ed Stovin        |
| John Barber       | Gil Busick      | John Dumas      | Richard Holliday | Dan Olson       | Kenny Thompson   |
| Jay Barthel       | Terry Caldwell  | Tom Edwards     | Brian Hurley     | James Orr       | Steven Toombs    |
| James Beall       | Debra Campbell  | James Eger      | James Karasek    | George Paniagua | Jeff Trowbridge  |
| Mike Becker       | Randy Carter    | Bonnie Ferguson | Ron Kunzelman    | Ken Paxton      | Sue Trubovitz    |
| Bret Belknap      | Matthew Cassle  | Jonathan Fisher | Steven Kurtz     | Mark Post       | Ernie Turner     |
| Ryan Bell         | Red Cauthen     | Rex Fisher      | Terry Layton     | Chris Radbourne | Robert Wakefield |
| Wayne Berg        | Ken Clarke      | Tom Funkhouser  | Mark Miller      | Doris Richard   | John Wills       |
| Bruce Bodenhofer  | Jim Coffey      | Rick Galbraith  | Phyllis Mlynek   | Chuck Ridge     | Bradley Zane     |
| Mars Bonfire      | Jim Colln       | Ron Gibbons     | Susan Moeller    | John Ruth       |                  |
| Chris Bowen       | Jon Coon        | Bob Glusti      | Rick Moore       | Don Rybarczyk   |                  |
| Mike Bradley      | Bill Daw        | Wayne Gordon    | Sander Moss      | Brian Schall    |                  |

## **CORVA CLUB SPONSORSHIP**

### *A Benefits Program Exclusively for CORVA Clubs*

#### **WHY SHOULD YOU BECOME A CORVA SPONSORED CLUB?**

As a Sponsored CORVA Club you will enjoy a variety of benefits. The most valuable to your club will probably be the Event Coverage Benefit. All of your club events will have liability coverage for the entire year. This could save your club thousands of dollars & help your club grow! Here is what you will need to become a CORVA Sponsored Club:

- 10 CORVA memberships minimum (or all members if less than ten.)
- Completed application
- Sponsorship Fee \$495.00 annual membership, in addition to individual memberships.

#### **WHAT ARE OUR OTHER BENEFITS?**

Your club will receive a CORVA Sponsored Club Banner to use throughout the year. All your club events and meetings can be published in our newsletter and on the CORVA Website, along with a hyperlink to your site. Your club will qualify for participation in CORVA annual elections.

#### **WHAT IS EVENT LIABILITY COVERAGE?**

Many times, when an OHV club attempts to hold a non-competitive event or rally, the landholder requests a "certificate of liability". Landholders can include the County, State or even the Bureau of Land Management. Some cities require certificates or "proof of insurance" as well, just to hold a meeting on their premises.

The CORVA Sponsored Club event coverage provides your club with event liability coverage throughout the year, and includes one proof of liability certificate (to provide to a park or other landholder for example.) Additional certificates are just \$150.00 each. Without the CORVA sponsorship, most clubs pay over \$1,000.00 just to hold one club event!

#### **HOW DO WE GET STARTED?**

CORVA Bylaws stipulate that a CORVA CLUB is one that has at least 10 current paid CORVA memberships (if club membership is greater than 10) or 100% current CORVA paid membership if the club has 10 members or less.

You may request the CORVA Sponsored Club form or download it from our website. You will need a complete list of club meetings, rallies and events for the year. Club officers will complete the form, and submit it along with the \$495.00 fee. A CORVA membership volunteer will contact your club to verify your CORVA memberships.

**Don't wait! The CORVA Sponsored Club period begins May 2009 until April 2010.**

#### **CORVA Sponsored Club**

**Attention: Roberta Woods**

**4346 E. Los Angeles Ave.**

**Simi Valley, CA 93063**

**Email: [roberta.woods@corva.org](mailto:roberta.woods@corva.org)**

**Fax (805) 526-4574**

**[www.CORVA.org](http://www.CORVA.org)**

*WANT OUR CORVA SPONSORED CLUB BROCHURE? SEND AN EMAIL TO: [ROBERTA.WOODS@CORVA.ORG](mailto:ROBERTA.WOODS@CORVA.ORG)*

#### **HOW TO PROMOTE YOUR SUCCESSFUL CORVA SPONSORED EVENT**

A successful OHV event begins with proper planning. Starting at least six months in advance, schedule regular committee meetings; invite all volunteers to participate from the beginning; discuss all aspects relating to the event.

Some items to discuss are site location, permits, insurance requirements, registration forms, volunteer possibilities, vendor donations, T-shirts or other souvenirs, raffles, food preparation and sales, award or other ceremonies, sound systems, vendor follow-up and thank-you letters. Document your process to assist in the next year's event.

The following suggestions will help your event be the success your club wants and needs!

Here's how:

- Keep focused. Don't over work your club with too much for one event. Hold more than one event if necessary.
- Advertise your event in all possible places, including local newspapers & message boards.
- Keep detailed records to document your expenses and results. Make a list of all vendors or contacts including specific information. The next committee will benefit from your experience.

### [CURRENT CORVA SPONSORED CLUBS](#)

**ORANGE COUNTY ATV ASSOCIATION**



**MEMBER DONATIONS**

**MEMBER DONATIONS**

**GENERAL**

GENE RIGGS \$20.00

**CLUB DONATIONS**

ON THE ROCKS 4 WHEELERS \$200.00  
OF CONEJO VALLEY

**WELCOME NEW MEMBERS**

BRANDON OAKS  
JUDY ANN REED  
MIKE & CORKY LAZZARINO

**WELCOME BACK OLD MEMBERS**

ROCKNE & PAMELA PARKER  
JAMIE & THELMA HEATHERLY  
LOUIS PARKER

**Help Wanted: CORVA Treasurer**

In May 2010, I will be stepping down as your CORVA Treasurer. As this position is not easily filled and requires some specific skills, I am beginning my search for a replacement now.

**Requirements:**

- Knowledge of Excel
- Knowledge of Quicken (or other computerized accounting software)
- Knowledge of Word (or other processing software)
- Experience in preparation of Financial Statements and Balance Sheets
- Experience in creation of Budgets
- Experience in preparation of tax returns (or familiar with corporate requirements)

As Treasurer, you will work directly and frequently with the Membership Chairperson, President and Vice President of Administration to reconcile all donations, membership and membership dues. You will be responsible for paying the association bills while keeping within the approved budgets. You will provide updates monthly and reconcile all accounting for monthly financial statements to be presented to the Board of Directors. You will sit on all special event committees and assist the coordination of incoming funds and the payment of all expenses. You will procure the associations insurance policies, assist with the filing of annual forms and provide the general ledger and financial statements to the association's CPA at year-end. You will keep detailed and organized records for review by the Board of Directors.

The Treasurer is voted in for a two-year term. Sorry, but there is no compensation for this position. For more information, you may email me directly at: [roberta.woods@corva.org](mailto:roberta.woods@corva.org) Thanks, Roberta

**CORVA NEEDS YOUR HELP!**

Here are the main projects that CORVA is involved with at this time. Please cut this form out and mail with your donation to:

**CORVA**  
**4346 E. Los Angeles Ave.**  
**Simi Valley, CA 93063-2937**

**I AM DONATING TO:**

Forest Comments Projects \$ \_\_\_\_\_  
Route Designation Process \$ \_\_\_\_\_  
Reopening of Clear Creek Area \$ \_\_\_\_\_  
Funding the CA Desert Legal Bills \$ \_\_\_\_\_  
Funding work at: \_\_\_\_\_ \$ \_\_\_\_\_  
Other Area: \_\_\_\_\_ \$ \_\_\_\_\_  
General Fund (non specific) \$ \_\_\_\_\_

Name \_\_\_\_\_

**TOTAL \$ \_\_\_\_\_**

Address \_\_\_\_\_

City \_\_\_\_\_

State / Zip \_\_\_\_\_

**Please make checks payable to CORVA**

Donations are not deductible as charitable contributions

# ***CORVA ASSOCIATE MEMBERS***

***... PLEASE SUPPORT THOSE THAT SUPPORT YOU ...***

## **ALBA ACTION SPORTS**

12160 COMMUNITY RD POWAY CA 92064-6871  
858-486-4380 [www.albaaction.com](http://www.albaaction.com)

## **BARRY'S TICKET SERVICE**

23622 CALABASAS RD #123, CALABASAS CA 91302-1584  
818-990-8499 [www.barrystickets.com](http://www.barrystickets.com)

## **BAYLESS ENGINEERING & MANUFACTURING**

26100 AVENUE HALL VALENCIA CA 91355-4808  
661-257-3373 [www.baylessengineering.com](http://www.baylessengineering.com)

## **B F GOODRICH**

1 PARKWAY S GREENVILLE SC 29615-5022  
864-458-4484 [www.bfgoodrichtires.com](http://www.bfgoodrichtires.com)

## **BIG O TIRES**

6052 CERRITOS AVE CYPRESS CA 90630-4828  
714-826-6334 [www.bigotires.com](http://www.bigotires.com)

## **CAMPING WORLD RV SALES**

6801 COLONY ST BAKERSFIELD CA 93307-6534  
661-831-5451 [www.campingworldofbakersfield.com](http://www.campingworldofbakersfield.com)

## **CENTRAL CAL OFF ROAD ADS.COM**

PO BOX 346 REEDLEY CA 93654-0346  
559-875-6880 [www.centralcaloffroadads.com](http://www.centralcaloffroadads.com)

## **CHAPARRAL MOTORSPORTS**

555 S H ST SAN BERNARDINO CA 92410-3415  
909-889-2761 [www.chaparralmotorsports.com](http://www.chaparralmotorsports.com)

## **CHET HUFFMAN MOTORSPORTS**

21541 NORDHOFF ST STE E CHATSWORTH CA 91311-6985  
818-727-1554 [www.chethuffmanmotorsports.com](http://www.chethuffmanmotorsports.com)

## **CURRIE ENTERPRISES**

1480 N TUSTIN AVE ANAHEIM CA 92807-1605  
714-528-6957 [www.currieenterprises.com](http://www.currieenterprises.com)

## **DGI MEDIA INC.**

9625 MISSION GORGE RD #B2 SANTEE CA 92071-3804  
619-722-6579

## **DOUGAN'S ENGINE AND MACHINE SHOP**

9072 LIMONITE AVE RIVERSIDE CA 92509-5035  
951-681-1961

## **DISTRICT 37 AMA DUAL SPORT**

3550 FOOTHILL BLVD LA CRESCENTA CA 91214-1828  
626-350-2101 [www.district37ama.org/dualsport](http://www.district37ama.org/dualsport)

## **ELECTRO TECH POWDER COATING**

836A RANCHEROS DR SAN MARCOS CA 92069-3009  
760-746-0292 [www.electrotechcoatings.com](http://www.electrotechcoatings.com)

## **FOX FACTORY RACING SHOX**

10943 WHEATLANDS AVE STE B SANTEE CA 92071-2893  
800-FOX-SHOX [www.foxracingshox.com](http://www.foxracingshox.com)

## **FWORD INDUSTRIES**

5267 WARNER AVE #140 HUNTINGTON BEACH CA 92649-4079  
714-350-1133 [www.needtoride.com](http://www.needtoride.com)

## **GEN-RIGHT OFF ROAD**

1816 ANGUS AVE UNIT A SIMI VALLEY CA 93063-3494  
805-584-8635 [www.genright.com](http://www.genright.com)

## **GMS GROUNDS MAINTENANCE SERVICES**

PO BOX 879 • NEWBURY PARK CA 91319-0879  
805-498-9495 [www.gmsinlandscape.com](http://www.gmsinlandscape.com)

## **HONDA OF GLENDALE**

1331 E. COLORADO ST GLENDALE CA 91205-1462  
818 246-2461 [www.hondaofglendale.com](http://www.hondaofglendale.com)

## **HUTCHINS MOTOR SPORTS**

55405 29 PALMS HWY YUCCA VALLEY CA 92284-2503  
760-365-6311 [www.hutchinshd.com](http://www.hutchinshd.com)

## **JART PRINTING SERVICES**

1210 N JEFFERSON ST STE H ANAHEIM CA 92807-1630  
714-666-0136 [www.jartdirectmail.com](http://www.jartdirectmail.com)

## **JIMCO ELECTRICAL CONSTRUCTION**

26752 OAK AVE STE H CANYON COUNTRY CA 91351-6615  
661-252-1227 [www.jimcoelectric.com](http://www.jimcoelectric.com)

## **JOHN BURR CYCLES**

9008 SIERRA AVE FONTANA CA 92335-4707  
909-823-1338 [www.johnburrcycles.com](http://www.johnburrcycles.com)

## **J'S MAINTENANCE**

3550 FOOTHILL BLVD LA CRESCENTA CA 91214-1828  
818-249-4023 [www.jsmaintenance.com](http://www.jsmaintenance.com)

## **KENNEDY ENGINEERED PRODUCTS**

38830 17TH ST E PALMDALE CA 93550-3915  
661-272-1147 [www.kennedyeng.com](http://www.kennedyeng.com)

## **KERECHUK MOTOR SERVICE**

120 E VALLEY BLVD ALHAMBRA CA 91801-5130  
626-308-0811 [www.kerechuk.com](http://www.kerechuk.com)

## **LATEST RAGE**

821 TAVERN RD ALPINE CA 91901-3811  
619-445-1176

## **LOCK JAW RACING**

616 LARK LN MOHAVE VALLEY AZ 86440-9219  
928-234-1546 [www.lockjawracing.com](http://www.lockjawracing.com)

## **MAIER MFG. INC.**

416 CROWN POINT CIR GRASS VALLEY CA 95945-9089  
530-272-4306 [www.maier-mfg.com](http://www.maier-mfg.com)

## **MALCOLM SMITH MOTORSPORTS**

7599 INDIANA AVE RIVERSIDE CA 92504-4145  
909-687-1300 [www.malcolmsmith.com](http://www.malcolmsmith.com)

## **MARINA SUZUKI**

12973 W WASHINGTON BLVD LOS ANGELES CA 90066-5128  
310-306-8595 [www.marinasuzuki.com](http://www.marinasuzuki.com)

## **MC KENZIES PERFORMANCE PRODUCTS**

807 E ORANGETHORPE AVE STE A ANAHEIM CA 92801-1176  
714-441-1212 [www.mckenzie.com](http://www.mckenzie.com)

## **NEW IMAGE 4X4**

1017 WOODLAND DR SANTA PAULA CA 93060-1252  
805-525-5522 [www.newimage4x4.com](http://www.newimage4x4.com)

## **PETROWORKS OFFROAD PRODUCTS**

111 W AVIATION RD FALLBROOK CA 92028-3303  
760-731-9434 [www.petroworks.com](http://www.petroworks.com)

## **PIZZA FACTORY**

8056 CALIFORNIA CITY BLVD CALIFORNIA CITY CA 93505-2661  
760-373-2224 [www.pizzafactoryinc.com](http://www.pizzafactoryinc.com)

## **POWDER COATING PLUS**

26140 AVENUE HALL VALENCIA CA 91355-4808  
661-295-0205 [www.powdercoatingplus.com](http://www.powdercoatingplus.com)

## **RACE PREP HOBBIES**

1542 E LOS ANGELES AVE #F SIMI VALLEY CA 93065-2069  
805-582-0005 [www.raceprephobbies.com](http://www.raceprephobbies.com)

## **RESTORATION SUPPLY COMPANY**

15260 SKY HIGH RD ESCONDIDO CA 92025-2401  
800-306-7008 [www.restorationstuff.com](http://www.restorationstuff.com)



**ASSOCIATES CONTINUED**

**RPM AUTOMOTIVE**

130A N VERDUGO RD GLENDALE CA 91206-3933  
818-247-4531

**SAND SPORTS MAGAZINE**

PO BOX 2260 COSTA MESA CA 92628-2260  
714-979-2560 [www.hotvws.com](http://www.hotvws.com)

**SAND SUPPLY**

22839 SATICOY ST CANOGA PARK CA 91304-4537  
818-437-4452 [www.sandsupply.com](http://www.sandsupply.com)

**SCOTTS PERFORMANCE PRODUCTS**

2625 HONOLULU AVE MONTROSE CA 91020-1706  
818-248-6747 [www.scottspperformance.com](http://www.scottspperformance.com)

**SIMI RECREATIONAL VEHICLE SALES**

1568 E LOS ANGELES AVE SIMI VALLEY CA 93065-2018  
805-522-1221 [www.simi-rv.com](http://www.simi-rv.com)

**SIMI VALLEY HONDA CANAM**

4346 E LOS ANGELES AVE SIMI VALLEY CA 93063-2937  
805-526-4122 [www.simivalleyhondaseadoo.com](http://www.simivalleyhondaseadoo.com)

**SPOD PRODUCTS**

661-755-8739 [www.4x4s-pod.com](http://www.4x4s-pod.com)

**SWAY-A-WAY**

9555 OWENSMOUTH AVE STE 9 CHATSWORTH CA 91311-8000  
818-700-9712 [www.swayaway.com](http://www.swayaway.com)

**TIERRA DEL SOL 4 WD CLUB**

PO BOX 4371 SAN DIEGO CA 92164-4371  
858-748-5096 [www.tds4x4.com](http://www.tds4x4.com)

**TRANSAXLE ENGINEERING**

9763 VARIEL AVE CHATSWORTH CA 91311-4315  
818-998-2739 [www.transaxleengineering.com](http://www.transaxleengineering.com)

**TRI COUNTY GEAR**

1143 W 2ND ST POMONA CA 91766-1308  
909-623-3373 [www.tricountygear.com](http://www.tricountygear.com)

**VEHICLE LIQUIDATION**

8719 PEARBLOSSOM HWY LITTLEROCK CA 93543-3120  
661-944-9300 [www.vehicle-liquidation.com](http://www.vehicle-liquidation.com)

**Concerts, Sports & Theatre Tickets**

**BARRYS TICKETS .COM**

**800-348-TIXX**

**[www.BarrysTickets.com](http://www.BarrysTickets.com)**

**WETCO, INC.**

PO BOX 4307 MISSION VIEJO CA 92690-4307  
949-510-8765 [www.wetco.biz](http://www.wetco.biz)

**WIDE OPEN BAJA**

6 BENDIX IRVINE CA 92618-2006  
949-635-2292 [www.wideopenbaja.com](http://www.wideopenbaja.com)

**YARMAN DRIVESHAFTS**

166 W AVENUE J5 LANCASTER CA 93534-4417  
661-723-1272

[www.corva.org/join](http://www.corva.org/join)

**NOT A MEMBER?**

**SIGN UP ONLINE OR USE THE FORM BELOW**

[www.corva.org/renew](http://www.corva.org/renew)

CUT OUT AND MAIL IN

**MEMBERSHIP APPLICATION**

- |  |  |
|--|--|
| <input type="checkbox"/> <b>FREE 90 DAY MEMBERSHIP</b> | <input type="checkbox"/> <b>RENEWING MEMBERS \$30</b>      |
| <input type="checkbox"/> <b>NEW MEMBER \$30</b>        | <input type="checkbox"/> <b>ASSOCIATE MEMBER \$365</b>     |
| <input type="checkbox"/> <b>LIFE MEMBER \$300</b>      | <input type="checkbox"/> <b>ADDRESS CHANGE <u>ONLY</u></b> |

NAME \_\_\_\_\_ SPOUSE'S NAME \_\_\_\_\_  
 ADDRESS \_\_\_\_\_ CITY \_\_\_\_\_ STATE \_\_\_\_\_ ZIP \_\_\_\_\_  
 PHONE \_\_\_\_\_ EMAIL \_\_\_\_\_  
 WHAT DO YOU RIDE? \_\_\_\_\_ WHERE? \_\_\_\_\_  
 CLUB OR BUSINESS NAME \_\_\_\_\_

**MAKE CHECKS PAYABLE TO CORVA**

**PLEASE USE OUR SECURE WEB SITE FOR ALL CREDIT CARD AND PAY PAL TRANSACTIONS**

**SEND TO: CORVA TREASURER - 4346 E. LOS ANGELES AVE. - SIMI VALLEY - CA - 93063-2937**  
**PLEASE ALLOW 4 - 6 WEEKS FOR PROCESSING**



Mail Distribution Address  
4346 East Los Angeles Ave.  
Simi Valley, CA 93063-2937

PRSR STD  
US Postage  
**PAID**  
Glendale, CA  
Permit No. 1353

Address Service Requested

# CORVA CALENDAR

**October:**

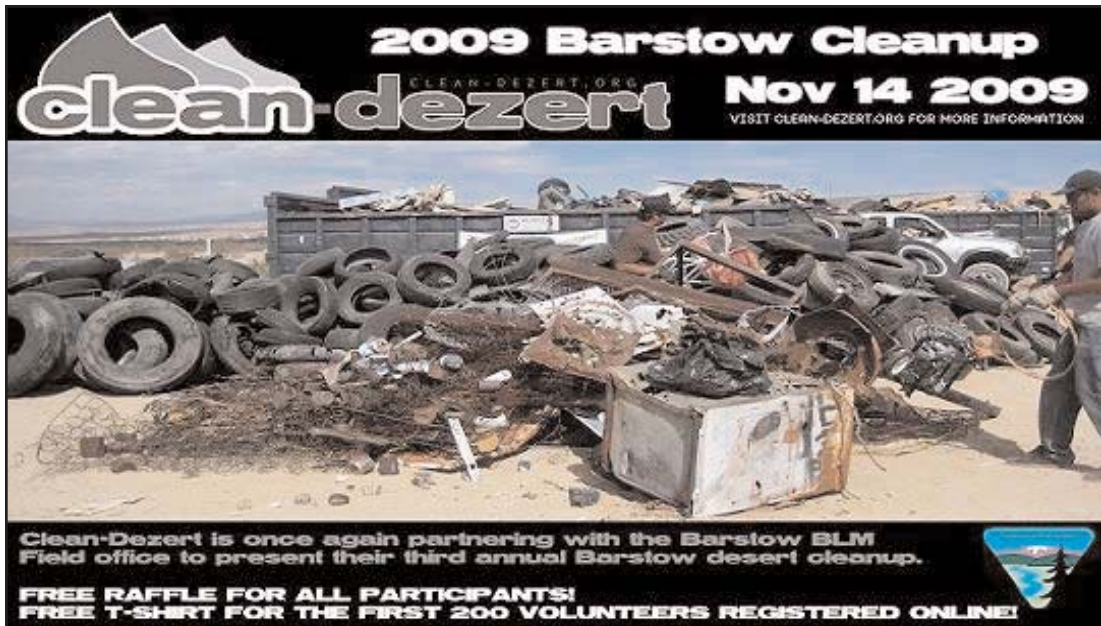
- 10/9-11 **OFF-ROAD EXPO** at Pomona Fairplex, Website: [www.offroadexpo.com](http://www.offroadexpo.com) (See Advertisement on pg. 6)  
To help in the CORVA booth Contact: Steve Hewitt [steve.hewitt@corva.org](mailto:steve.hewitt@corva.org)
- 10/23-25 **NORTHERN JAMBOREE - FRANK RAINES OHV PARK** CORVA Board of Directors Meeting on Sunday morning.  
(See Advertisement on pg. 13)
- 10/24-25 **5TH ANNUAL EL MIRAGE MID-YEAR CLEANUP & POKER RUN.** A one day clean-up at the El Mirage OHV area.  
Website: [www.elmirage.org](http://www.elmirage.org) Contact: Ed Waldheim at: [edwaldheim@aol.com](mailto:edwaldheim@aol.com)

**November:**

- 11/7 **CANCELLED** - 9TH ANNUAL GLAMIS POKER RUN presented by the Orange County ATV Association.
- 11/14 **2009 BARSTOW CLEANUP** presented by Clean Dezert

**January:**

- 1/23-24 **15th Annual Truckhaven Challenge** - Mark your calendar now! More information next month.



FOR UP TO DATE INFORMATION PLEASE VISIT THE CORVA WEB SITE  
[WWW.CORVA.ORG](http://WWW.CORVA.ORG)